

# 3100

## PORTABLE SUB-BOTTOM PROFILING SYSTEM

### FEATURES

- Portable
- Low power requirement (runs on AC or DC)
- Choice of towfish depending on the application
- Pole mount option for shallow water surveys
- Easy to setup and operate

### APPLICATIONS

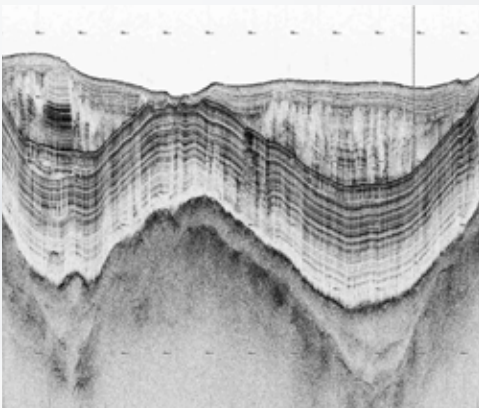
- Geological Surveys
- Geohazard Surveys
- Buried Object Location
- Mining/Dredging Surveys
- Bridge/Shoreline Scour Surveys
- Pipeline and Cable Location



The 3100 is EdgeTech's portable version of their highly successful sub-bottom profiler product line. The system utilizes EdgeTech's Full Spectrum CHIRP technology which provides higher resolution imagery of the sub-bottom structure and greater penetration.

The 3100 is ideally suited for use in rivers, lakes, ponds and shallow water ocean applications up to 300m max depth. The system was designed for customers that require a portable system that can be used from smaller boats while not wanting to sacrifice image quality.

A 3100 system comes with a choice of two towfish; either the SB-424 or SB-216S. These towfish operate at different frequency ranges and selection between the two depends on the type of application. The 424 operates at 4-24 kHz and will provide slightly higher resolution but less penetration. The 216S operates at 2-16 kHz and provides slightly less resolution but greater penetration. Along with a towfish, the 3100 system comes with a portable splash-proof topside processor with laptop computer running EdgeTech's DISCOVER software for display of the sonar data. The system comes standard with a 35m tow cable with customer-specified lengths also available.



For more information please visit [EdgeTech.com](http://EdgeTech.com)

info@EdgeTech.com | USA 1.508.291.0057

# 3100

## PORTABLE SUB-BOTTOM PROFILING SYSTEM

### KEY SPECIFICATIONS

TOWFISH	SB- 216S	SB- 424
Frequency Range	2-16 kHz	4-24 kHz
Vertical Resolution (depends on pulse selected)	6-10 cm	4-8 cm
Penetration		
In coarse calcareous sand	6m	2m
In clay	80m	40m
Length	105 cm (41")	77 cm (30")
Width	67 cm (26")	50 cm (20")
Height	40 cm (16")	34 cm (13")
Weight in Air	76 kg (167 lbs.)	45 kg (100 lbs.)
Weight in Water	32 kg (70 lbs.)	18 kg (40 lbs.)
Max Depth Rating of Towfish	300 meters	
<b>TOPSIDE PROCESSOR</b>		
Hardware	Rugged, portable splashproof enclosure	
Operating System	Windows 7	
Display	Laptop Computer (Optional: Splash Proof/Ruggedized Laptop)	
Archive	DVD-R/W	
File Format	JSF, SEG-Y & XTF	
I/O	Ethernet	



SB-216S TOWFISH



SB-424 TOWFISH

For more information please visit [EdgeTech.com](http://EdgeTech.com)

info@EdgeTech.com | USA 1.508.291.0057